

PRODUCTS

TECHNICAL INFORMATION

SD20 SERIES SLIDING GLASS DOOR



PRODUCT DESCRIPTION

SYSTEM DESCRIPTION:

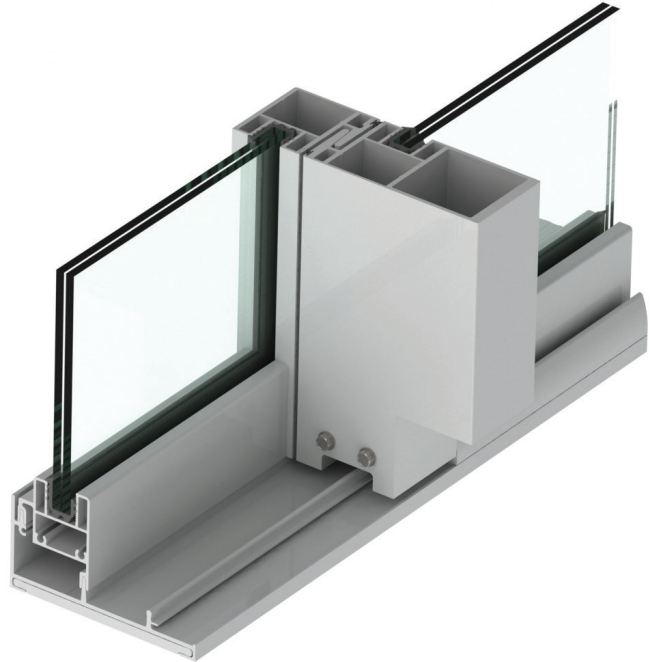
- › Large Missile Impact and Small Missile resistant
- › Frame depth: 5 7/8"
- › Configurations: OX, XO, OXO, OXXO
- › Max. height: 132"
- › Max. panel width: 56"
- › Minimum width for ADA compatibility is 80" for OX/XO configuration
- › Sill height of 2 3/4"

FEATURES

- › Single track frame
- › Laminated/Insulated (1 5/16") and laminated (9/16") glass available
- › Easy operation
- › Attachable to adjacent window wall system
- › Two-point stainless steel locking mechanism
- › Two pairs of side-adjusted tandem stainless steel rollers per operable panel

PERFORMANCE

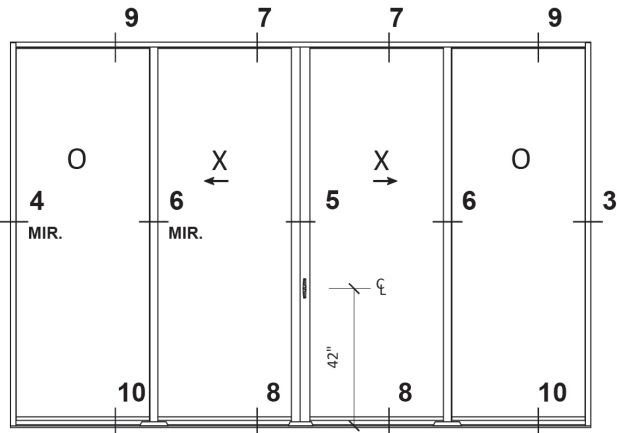
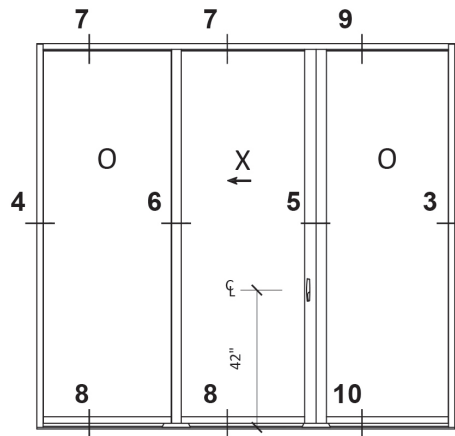
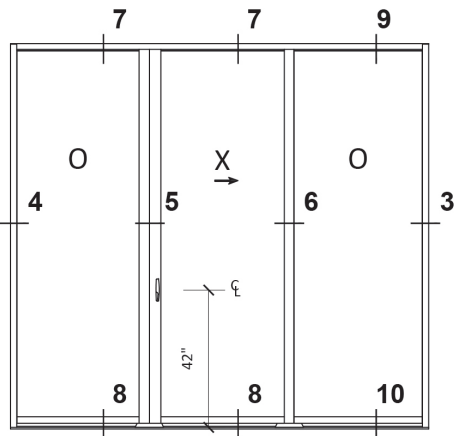
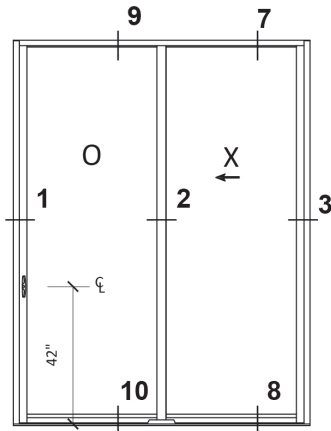
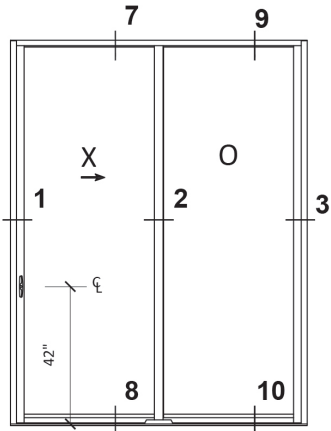
- › Design loads:
 - + 120/-130 PSF (LMI)
 - + 110/-160 PSF (SMI)(See product approval charts for specific design loads capacities)
- › Water infiltration: 18 PSF



PLEASE REFER TO EPSYLON USA FLORIDA PRODUCT APPROVAL FOR CURRENT TESTED PANEL SIZE AND DESIGN PRESSURE CHARTS.

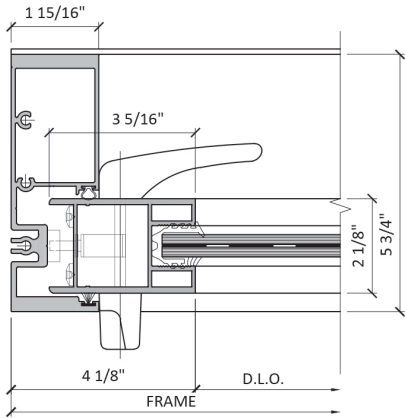
TYPICAL DETAILS

AVAILABLE CONFIGURATIONS

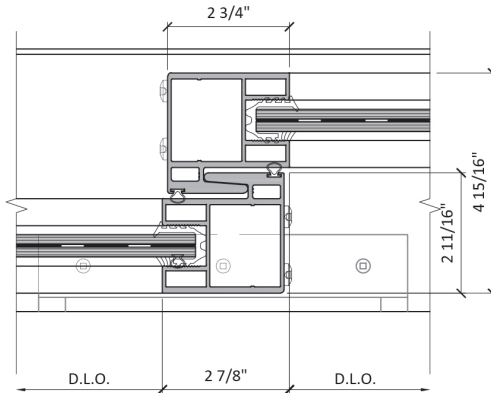


SCALE: 1 : 8

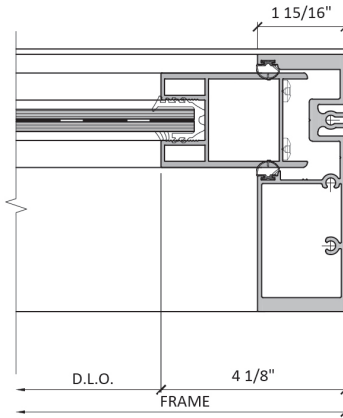
TYPICAL DETAILS



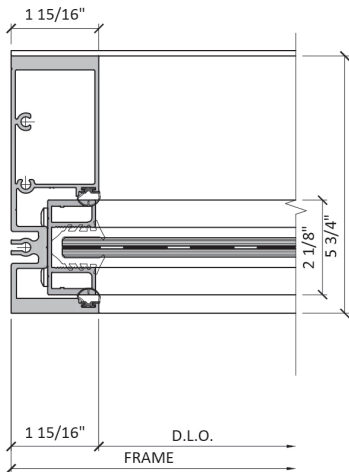
1 FREE STANDING JAMB



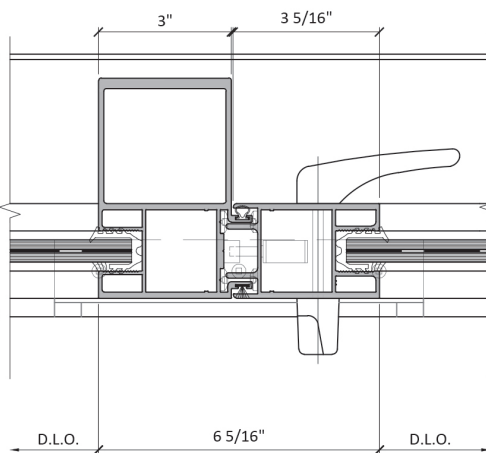
2 STANDARD INTERLOCK



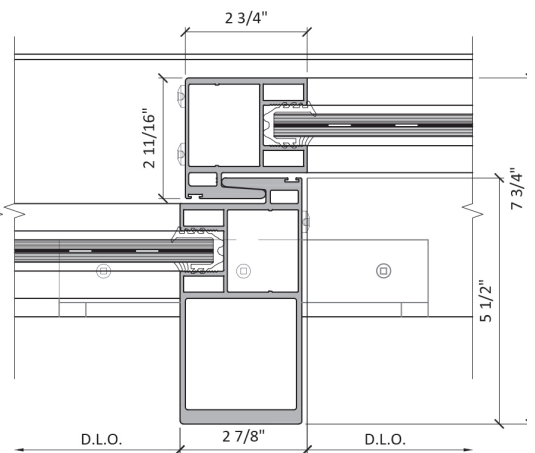
3 FREE STANDING JAMB



4 FREE STANDING JAMB



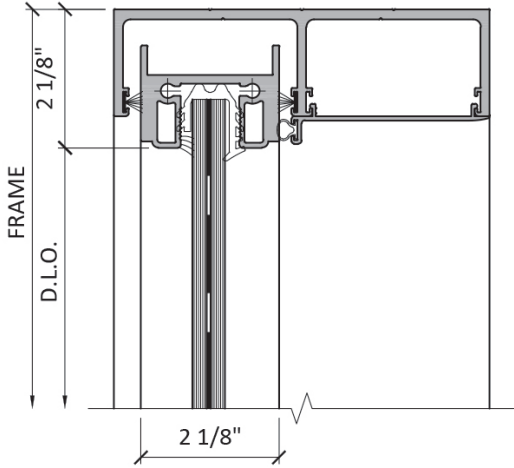
5 HEAVY DUTY MEETING STILES



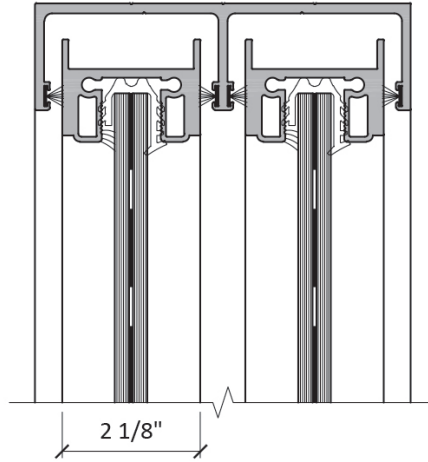
6 HEAVY DUTY INTERLOCK

Option with 1 5/16" Laminated insulated glass available

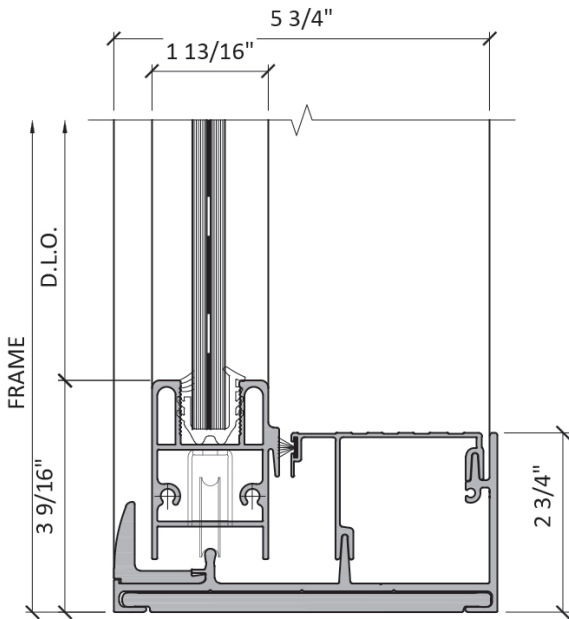
TYPICAL DETAILS



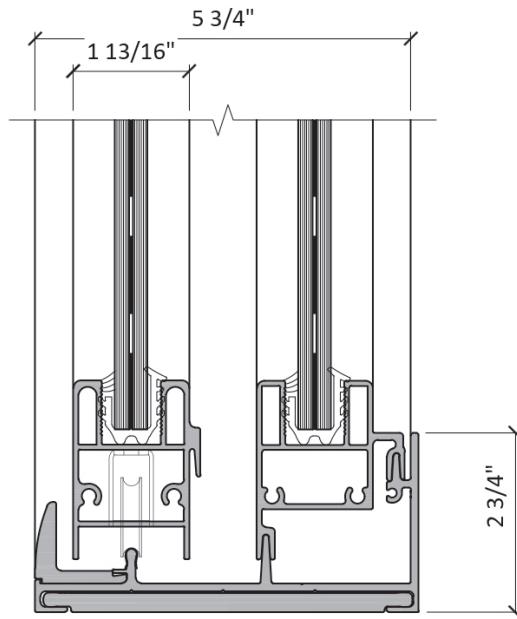
7 HEAD DETAIL



9 HEAD DETAIL



8 BASE DETAIL



10 BASE DETAIL



EPSYLON USA

1881 S.W. 3rd Street

Pompano Beach, FL 33069

Tel.: 954-942-3322

info@epsylon.ca
