

# PRODUCTS

TECHNICAL INFORMATION

## **STL40 SERIES** **LIFT AND SLIDE GLASS DOOR**



# PRODUCT DESCRIPTION

## SYSTEM DESCRIPTION:

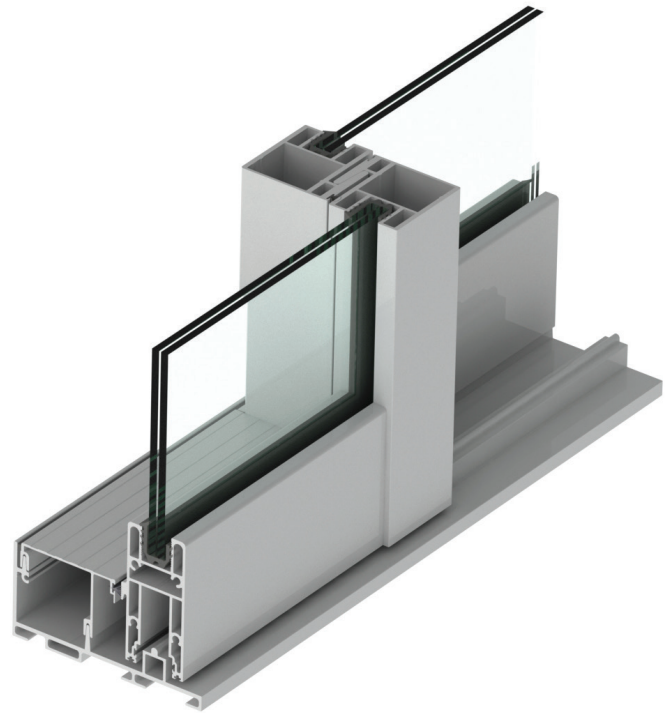
- › Large Missile Impact and Small Missile resistant
- › Frame depth: 5 7/8"
- › Configurations: OX, XO, OXO, OXXO
- › Max. height: 118"
- › Max. panel width: 52 3/4"
- › Sill height of 2 3/4"

## FEATURES

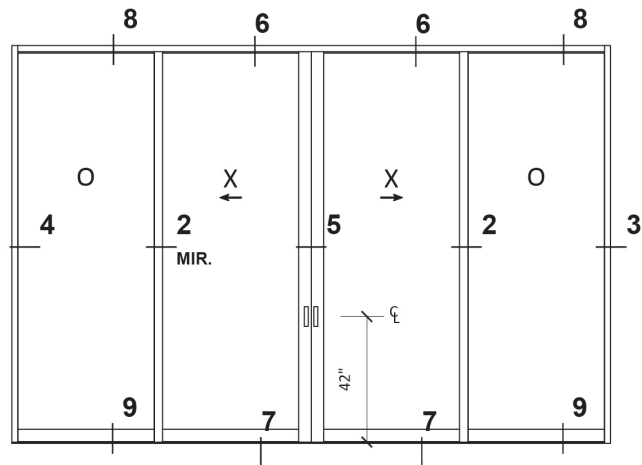
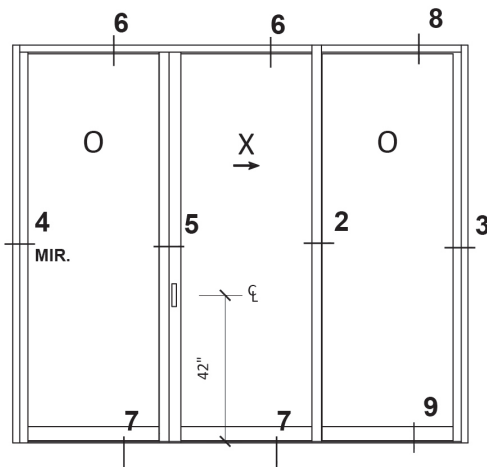
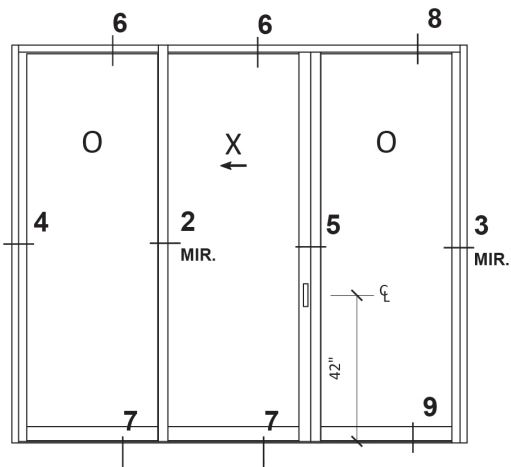
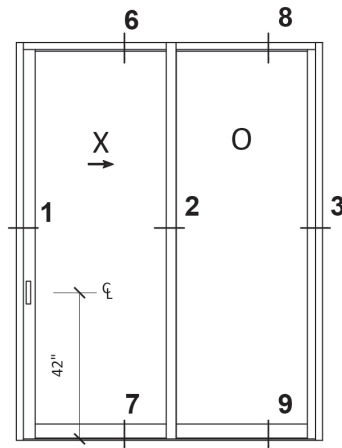
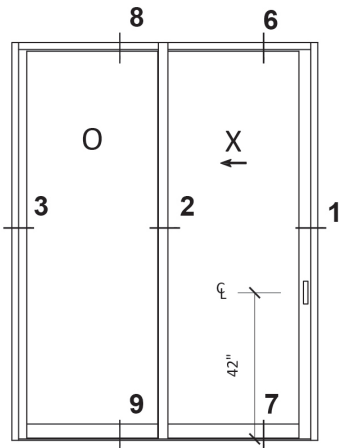
- › Single track frame
- › Laminated/Insulated (1 5/16") and laminated (9/16") glass available
- › Attachable to adjacent window wall system
- › Fully integrated Lift and slide mechanism

## PERFORMANCE

- › Design loads:
  - + 100/-100 PSF (LMI/SMI)
  - (See product approval charts for specific design loads capacities)
- › Water infiltration: 15 PSF

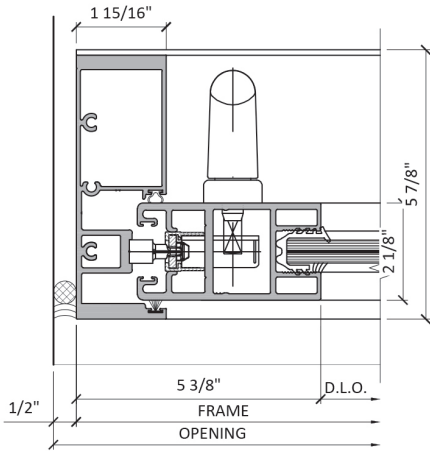


# TYPICAL DETAILS

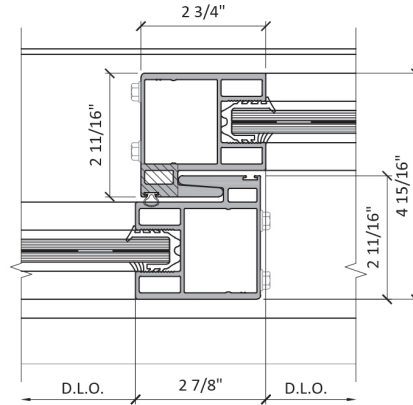


SCALE: 1 : 8

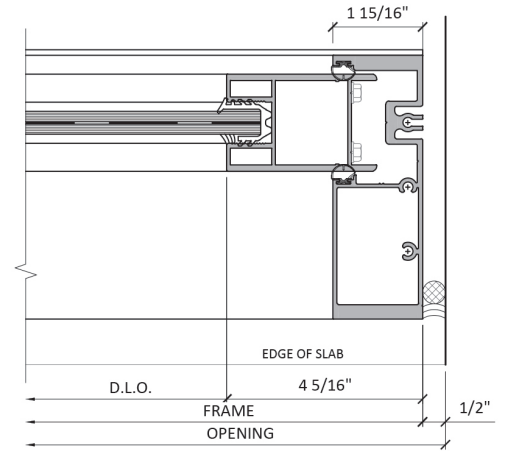
# TYPICAL DETAILS



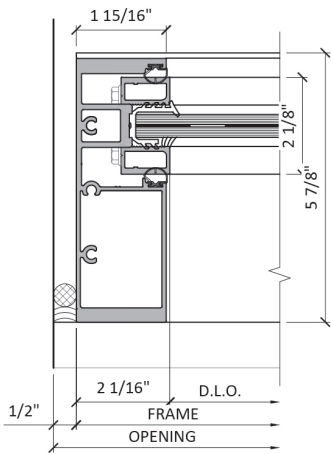
**1** JAMB DETAIL  
CONCRETE  
VISION GLASS



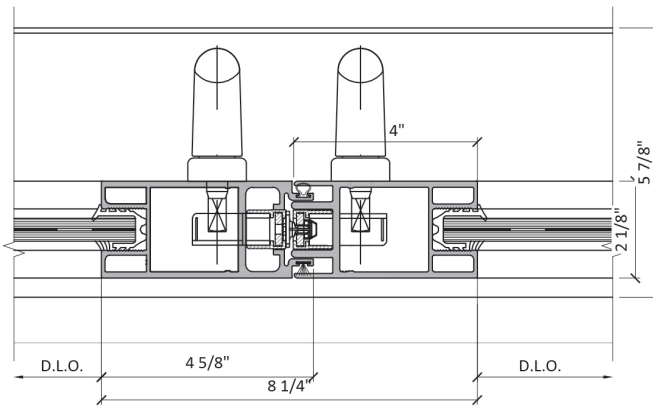
**2** MEETING STILE  
VISION GLASS



**3** JAMB DETAIL  
CONCRETE  
VISION GLASS



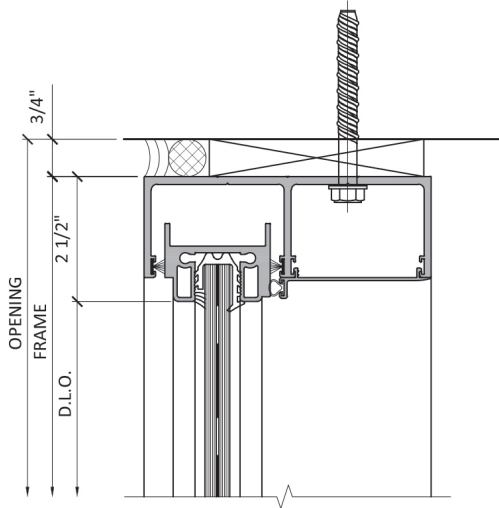
**4** JAMB DETAIL  
CONCRETE  
VISION GLASS



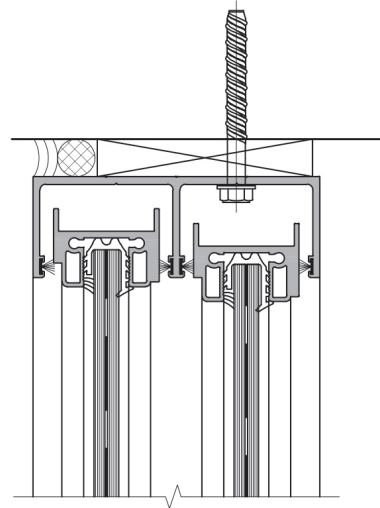
**5** INTERLOCKING MEETING STILE  
VISION GLASS

SCALE : 1 : 4

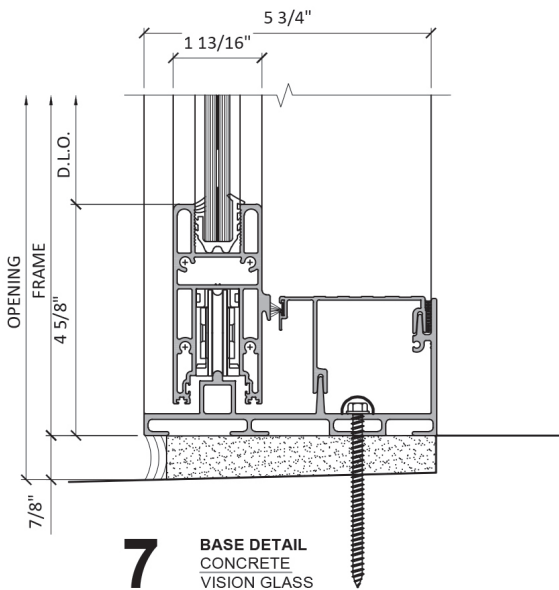
# TYPICAL DETAILS



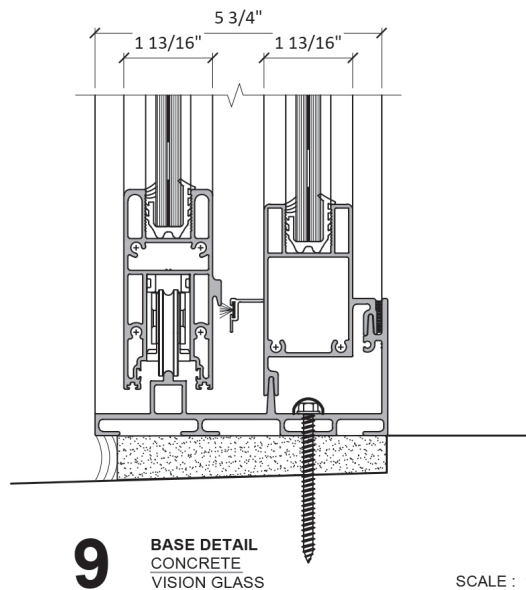
**6** HEAD DETAIL  
CONCRETE  
VISION GLASS



**8** HEAD DETAIL  
CONCRETE  
VISION GLASS



**7** BASE DETAIL  
CONCRETE  
VISION GLASS



**9** BASE DETAIL  
CONCRETE  
VISION GLASS

SCALE : 1 : 4



**EPSYLON USA**

1881 S.W. 3rd Street

Pompano Beach, FL 33069

Tel.: 954-942-3322

[info@epsylon.ca](mailto:info@epsylon.ca)

---