

PRODUCTS

TECHNICAL INFORMATION

WW40 SERIES FIXED WINDOW WALL



PRODUCT DESCRIPTION

SYSTEM DESCRIPTION:

- › Large Missile Impact and Small Missile Impact
- › Frame size (depth): 8 1/8"
- › Two-sided structurally glazed window wall
- › Frame sightline: 2 1/2" (perimeter only)
- › Maximum height: refer to product approval
- › Maximum panel width: 6'-0" (72")

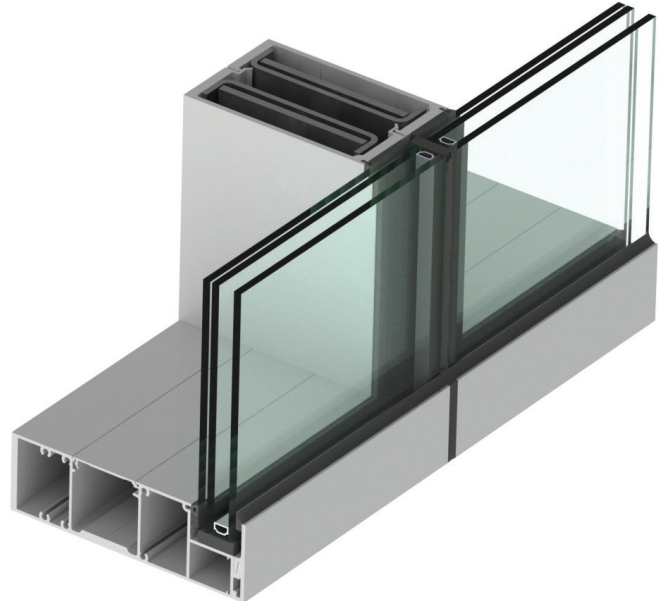
FEATURES

- › Pre-assembled & pre-glazed
- › Insulated/laminated (1 5/16") and laminated (9/16") glass available
- › 90° dart corners
- › Reinforced options available

PERFORMANCE

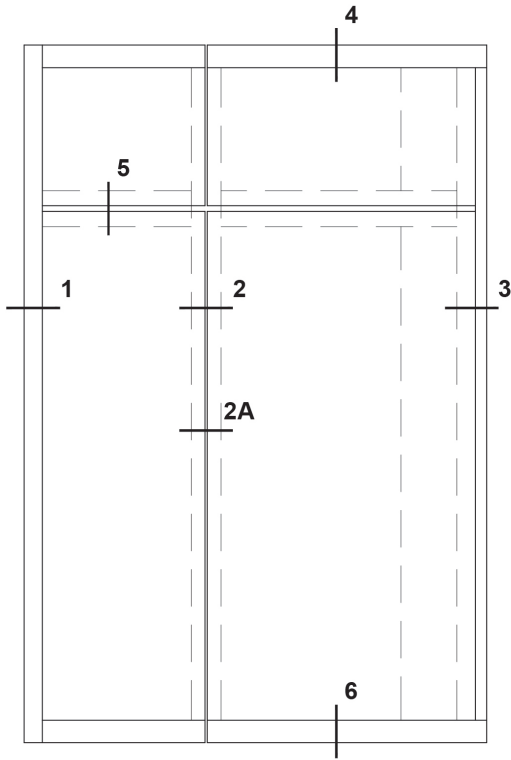
- › Design loads:
 - + 120/-120 PSF (LMI/SMI)

(See product approval charts for specific design loads capacities)
- › Air infiltration: 6.24 PSF
- › Water Infiltration: 15 PSF

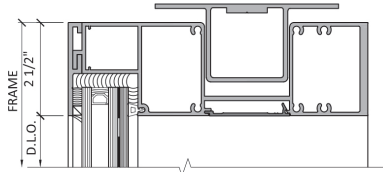


TYPICAL DETAILS

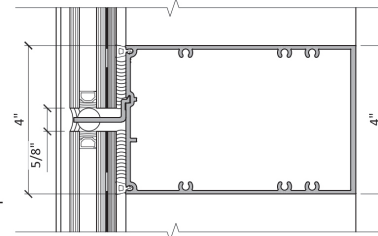
Option 1: 9/16" Laminated glass



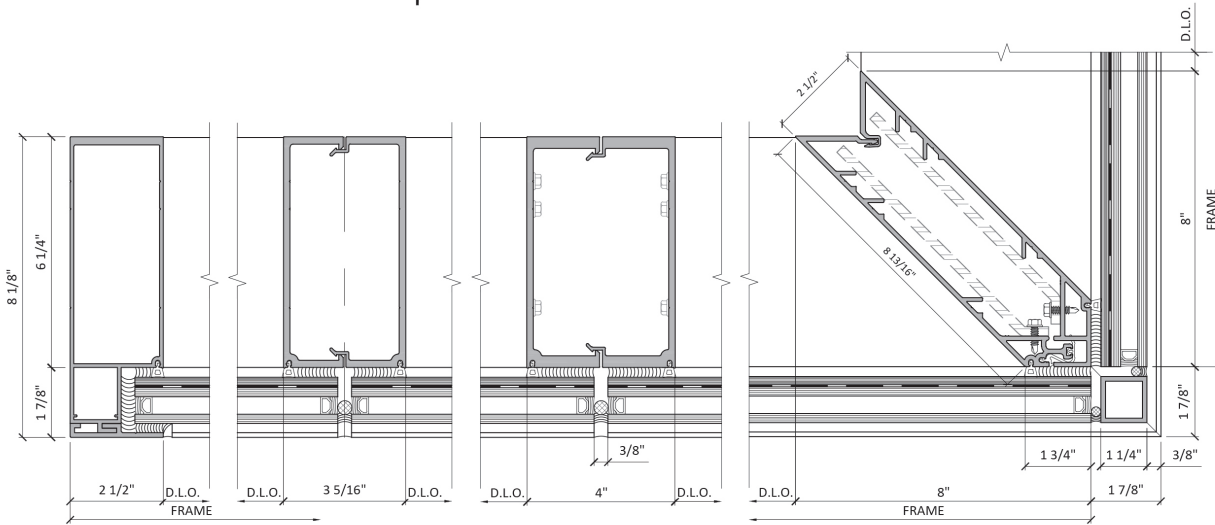
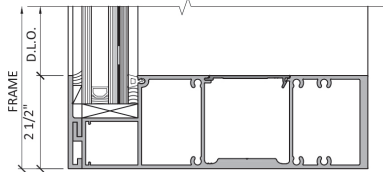
4 HEAD DETAIL



5 HORIZONTAL DETAIL



6 SILL DETAIL



1 JAMB DETAIL

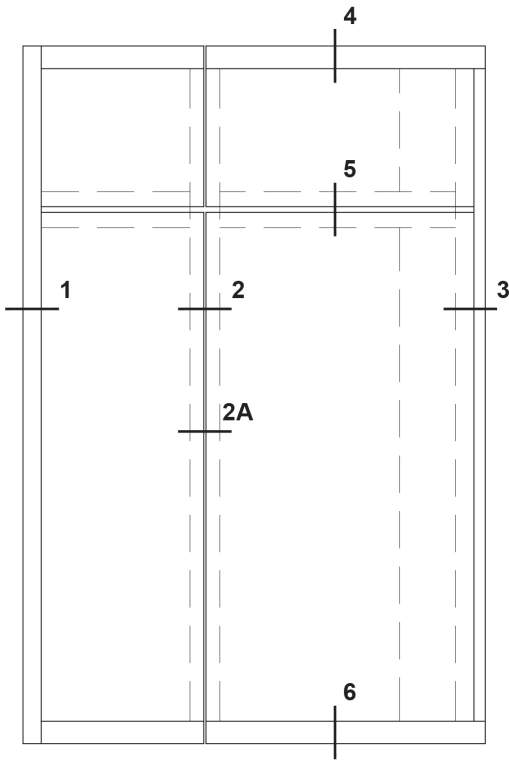
2 SPLIT MULLION

2A SPLIT MULLION

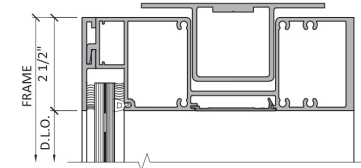
3 CORNER DETAIL

TYPICAL DETAILS

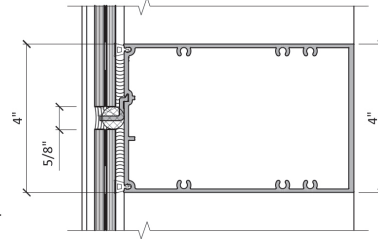
Option 2: 1 5/16" Insulated / Laminated glass



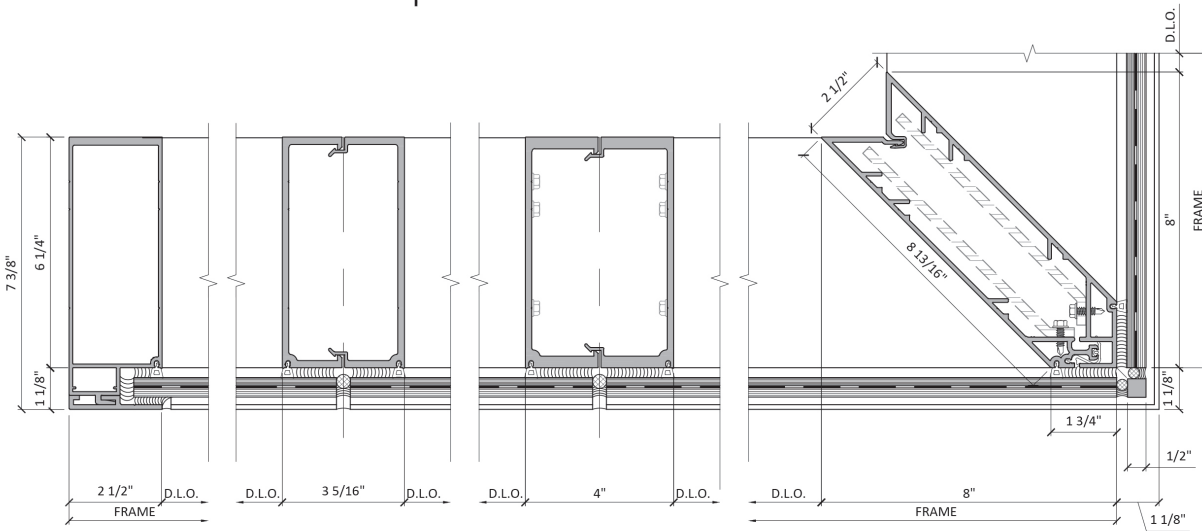
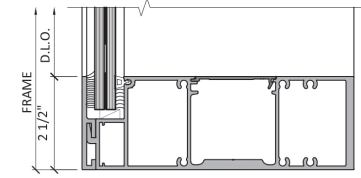
4 HEAD DETAIL



5 HORIZONTAL DETAIL



6 SILL DETAIL



1 JAMB DETAIL

2 SPLIT MULLION

2A SPLIT MULLION

3 CORNER DETAIL



EPSYLON USA

1881 S.W. 3rd Street

Pompano Beach, FL 33069

Tel.: 954-942-3322

info@epsylon.ca
